

REGIONAL CHAMBER ROUNDUP

PLEASE SEE PAGES 29-38 FOR THE TRICOUNTY AREA CHAMBER OF COMMERCE NEWS AND INFORMATION SECTION IN THIS ISSUE.

PHOENIXVILLE REGIONAL CHAMBER OF COMMERCE

• 171 East Bridge Street, Phoenixville, PA 19460 • 610.933.3070 • fax 610.917.0503
• info@phoenixvillechamber.org • www.phoenixvillechamber.org



PHOENIXVILLE
REGIONAL CHAMBER OF COMMERCE

The Phoenixville Regional Chamber of Commerce is an independent organization serving the business interests of Northern Chester, Western Montgomery and parts of Delaware Counties.

The Chamber's mission is to "advance the principles of free enterprise by providing the leadership which will enhance the economic climate of the region, address the priority needs of its members, and interact with other individuals and organizations for the overall benefit of the business community."

UPCOMING EVENTS

September Monthly Membership Meeting, Breakfast - Tuesday, Sept 12th

Join us to stay up to date with the Chamber, network with other Chamber members, and discuss new ideas for your business. There will be a municipal update from Jean Krack.

Register at our website www.phoenixvillechamber.org

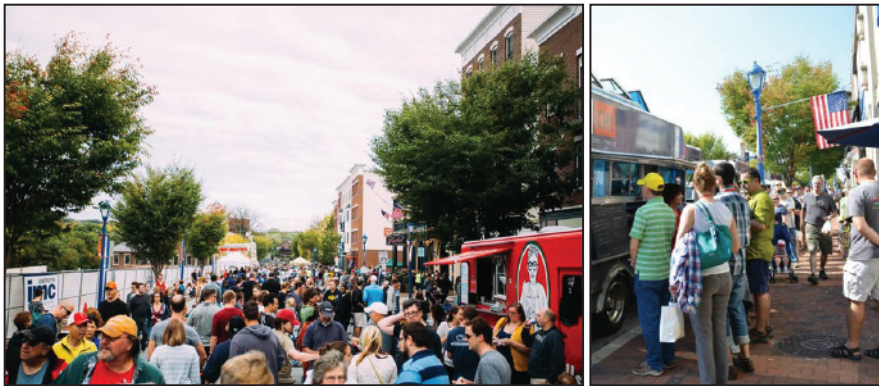
2017 ANNUAL CHARITY GALA: A SEASON OF GIVING - Saturday, Nov 18th

The Chamber's Annual Gala has donated more than \$50,000 to local non-profits since 2005. This year's beneficiary is **The Phoenixville Area Senior Center**

HOW CAN YOU BE PART OF SUCH A GREAT CAUSE?

Plan to Attend—Donate a Ticket—Donate an Auction Item— Bid on Auction Items via Your Smartphone—Sponsor the Event

Phoenixville Country Club, 355 Country Club Road, Phoenixville- 5:30-9:00 PM



Phoenixville Food Truck Festival – October 7, 2017

The Food Truck Festival, taking place Saturday, October 7 between 12pm and 6pm, will feature more than 30 spectacular food trucks and a multitude of vendors to browse. Bridge Street will be closed to traffic between the 100 and 200 blocks and will feature food trucks and vendors. Seating and music will be in the Main and Bridge Parking Lot.

Chester County Chamber Alliance Presents: 2017 Annual Mega-Mixer & Business Expo October 12

Brought to you by the Chamber Alliance of Chester County, connect and network with over 700 attendees and over 80 vendors at this Annual Mega Mixer!

Free to attend, \$125 to set up a table top - \$150 if electricity is needed.

Church Farm School, 1001 Lincoln Highway, Exton, PA 19341, 5-7 PM

First Phoenixville Harvest Fest – November 2-5

On November 2nd, we kick off the first Harvest Fest celebration Phoenixville! This four-day event is designed to showcase our beautiful Borough parks through a variety of exciting events including a pet parade and expo in Reeves Park, the family-friendly Harvest Around the World celebration in Thornton Park, and a Saturday-morning Harvest Breakfast.

For more details, visit www.pvxharvestfest.com.

Offering Products and Services to Help Your Business Grow and Prosper!

Our experienced professionals listen to your needs and help you make the right financial decisions for your business.

Now Located In Limerick!
Limerick Square Shopping Center
70 Buckwalter Road
Limerick, PA 19468



We're Better.

Change to American Heritage Today!

888-JOIN-US-9 www.AMHFCU.org/Limerick

- 30 American Heritage branches in Southeastern PA
- 30,000 Surcharge-Free ATMs Nationwide
- 7,200 Shared Branches Nationwide



EARTH ENGINEERING INCORPORATED

Geotechnical Engineers & Geologists

We've Got The 422 Region Covered!



- Subsurface Investigations
- Construction Inspection and Geotechnical Design & Analysis
- Clean Fill Testing
- Stormwater Infiltration Testing
- Laboratory Soils Testing
- Carbonate Site Assessments
- Environmental Site Assessments and Remediation

www.earthengineering.com

Corporate Headquarters: 610-277-0880

Central PA: 717-697-5701

Lehigh Valley: 610-967-4540

South Jersey: 856-768-1001

QUALITY * COMMITMENT * PERFORMANCE