



**EARTH  
ENGINEERING  
INCORPORATED**  
*Geotechnical Engineers & Geologists*

Earth Engineering Incorporated (EEI) is a full-service geotechnical engineering firm, headquartered in East Norriton, Pennsylvania. With a strong commitment to delivering high-quality engineering solutions, EEI has built a solid reputation for providing expert geotechnical, geo-structural, environmental, and construction materials testing services. Founded in 1990, the firm has since expanded its reach across the Mid-Atlantic region, serving clients in Pennsylvania, New Jersey, Delaware, and beyond.



**INVESTIGATION**

At the core of EEI’s success is its talented team of engineers, geologists, and technical experts. Their extensive experience and expertise enable us to tackle a wide range of projects, from complex infrastructure developments to large-scale commercial and industrial ventures. EEI’s portfolio includes work on local projects along the 422-region including Top Golf in King of Prussia, Limerick Autopark, Providence Town Center and Sanatoga Green to name a few. Major projects such as the Interstate I-95 in Philadelphia, the Barnes Museum, and large distribution centers for nationally recognized companies are also part of our portfolio. Our ability to handle high-profile projects has made EEI a trusted partner for both public and private sector clients.

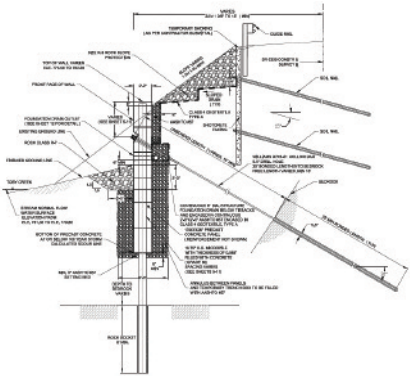
One of EEI’s key strengths lies in its comprehensive suite of geotechnical and geo-structural engineering services. The company offers subsurface investigations, foundation design, slope stability analysis, support of excavation/sheeting and shoring, and more. Whether it’s a small-scale project or a large infrastructure

endeavor, EEI provides tailored solutions using state-of-the-art equipment and technologies to develop reliable recommendations, which have been instrumental in the success of significant regional projects.

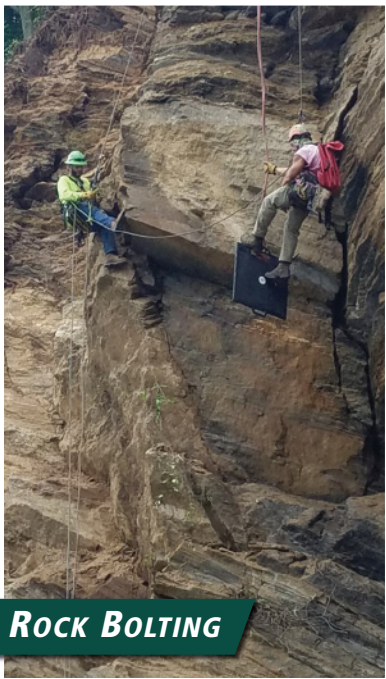
In addition to geotechnical services, EEI also provides environmental consulting. The firm helps clients navigate complex regulatory landscapes and provides essential services such as environmental site assessments, soil and groundwater investigations, and remediation strategies. EEI’s involvement in environmentally sensitive projects like land redevelopment for public parks and clean fill assessments demonstrates their ability to manage environmental risks while ensuring compliance with local, state, and federal regulations.



**SOIL NAIL**



Highway Projects - S.R.



**ROCK BOLTING**





“  
*At the core of EEI's success is its talented team of engineers, geologists, and technical experts. Their extensive experience and expertise enable us to tackle a wide range of projects, from complex infrastructure developments to large-scale commercial and industrial ventures.*  
 ”

**THE EEI TEAM**

EEI is also expanding its geo-structural design services across the country. With the increased demand for high-quality engineering, the firm is extending its services to new markets in the Midwest, Southeast, and beyond. This expansion is part of EEI's strategic growth plan to meet the needs of a rapidly evolving industry and to bring our expert solutions to more regions.

With over three decades of experience, Earth Engineering Incorporated continues to be a trusted name in the geotechnical and environmental engineering industry. Our dedication to excellence, client-focused approach, and commitment to innovation are a key focus for EEI.

**For additional information, please call 610.277.0880  
 and visit [www.earthengineering.com](http://www.earthengineering.com).**



**PE STATES**